

Inclusive Energy Ltd  
Unit Inventory

Unit	VIN / Serial #	Year	License #	Make	Model	Model	Purchased Price	Current Market Value	Purchased Date	Mileage	Hours	Hours
101		2013		KENWORTH		T800 TandemAxle- Winch	\$229,100		2013	37,655	1,211.7	NA
102		2013		KENWORTH		T800 TandemAxle- Winch	\$229,100		2013	36,221	1,254.2	NA
103		2013		KENWORTH		T800 TriAxle-TeXBed	\$311,200		2013	34,863	1,789.4	NA
104		2013		KENWORTH		T800 TandemAxle- Winch	\$229,100		2013	56,503	1,739.3	NA
105		2014		KENWORTH		T800 TandemAxle- Winch	\$229,100		2014	95,008	2,929.1	NA
106		2014		KENWORTH		T800/Tri-axle/Haul Truck	\$176,500		2014	15,261	1,019.9	NA
107		2014		KENWORTH		T800/Tri-axle/Haul Truck	\$176,500		2014	24,154	1,569.7	NA
Trailers							\$1,580,600					
T110		2014		DOEPKER		Sissorneck Triaxle Heavyhaul Trailer	\$101,300		2014			
T111		2014		DOEPKER	SN16928S	Sissorneck Triaxle Heavyhaul Trailer	\$101,300		2014			
T113		2014		DIAMOND C		RoadClipper Tilt-Deck Trailer	\$7,300		2014			
T114		2015		MERIDIAN		Merdian Fuel Trailer	\$27,900		2015			
Heaters							\$237,800					
FH112		2013		DRAGON	38MMBTU	Frac Water Heater - Diesel Fired	\$941,000		2013			NA
FH114		2013		DRAGON	38MMBTU	Frac Water Heater - Diesel Fired	\$941,000		2013			NA
FH116		2015		ASTRO	25MMBTU	Frac Water Heater - Tri Fuel Fired	\$988,500		2015		3,039.3	4,661.9
FH118		2015		ASTRO	25MMBTU	Frac Water Heater - Tri Fuel Fired	\$988,500		2015		5,403.1	8,211.8
FH120				ASTRO	21MMBTU	Frac Water Heater - Tri Fuel Fired	\$151,400		2015		6,258.3	NA
FH131		2019		ENVIROFLAME	27MMBTU	Frack Water Heater - Tri Fuel Fired	\$600,000		Dec 2018		1,706.0	NA
FH132		2019		ENVIROFLAME	27MMBTU	Frack Water Heater - Tri Fuel Fired	\$600,000		Dec 2019		783.7	NA
FH133		2015		DRAGON	38MMBTU	Frac Water Heater - Tri Fuel Fired	\$575,000		Dec 2020			NA
FH134		2018		DYNAMIC	40MMBTU	Frac Water Heater - CNG & Propane Fired	\$309,000		Jan-19	NA	NA	NA
Pickups							\$6,094,400					
Main Asset Value							\$7,912,800					
50		2013		DODGE	Ram	1500 4x4 Crewcab	\$45,939			269,621		
51		2012		FORD	F250	F250 4x4 Heavy Duty Crewcab	\$37,719			157,802		
52		2014		DODGE	Ram	1500 4x4 Crewcab	\$36,140			178,768		
Other												
DP001		2014		PIONEER	PP66S12L71	Diesel Pump ser# PP22972	\$43,900		2015		4017.5	
pump		2014		HONDA		Honda Transfer pump - 2"	\$450		2015			

18/9/2019

## INCLUSIVE NORTH SHOP INVENTORY

Part ID # or location	Name	Description	Quantity	Approx Purchase Price	Comments	Date Counted
	Frame mount tank	300 gal fuel tank (white from Dragons)	2	\$3,000	Original to Dragon 5H	09-Sep-19
	Tidy Tank	175 gal portable fuel tank (red)	2	\$2,500		09-Sep-19
	Tidy Tank	150 gal portable fuel tank (red)	2	\$2,000		09-Sep-19
	Tidy Tank	65 gal portable tank used for H2O	1	\$250		09-Sep-19
	Tidy Tank	50 gal portable fuel tank (used in Ranger)	1	\$200		09-Sep-19
	Candy Cane	10" J-Tube (big blue Tubes - dented)	2	\$1,500		09-Sep-19
	Tubular Union	12" Dia flanged 10' long, connect manifds	2			09-Sep-19
	Frac Tank	400BBL Dragon Vertical Tank	1	\$25,000	Damaged, lining failed	
	Submersible Stand	Submersible pump stand 15"	1	\$7,000		09-Sep-19
	Hose floats	cylindrical red plastic floats	25	\$2,000		09-Sep-19
	Hammer Unions	big wooden crate w/ 4" Unions, wing & thread halves	approx. 200	\$16,000		09-Sep-19
	Discharge hose	short 6", 8", & 10" discharge hose	approx. 15			09-Sep-19
	Lay Flat Hose	Pallets of 10" x 50 ft lay flat hose folded & banded	4	\$8,400		09-Sep-19
	5 gal fuel jugs	plastic fuel jugs for Diesel, Gas, Kerosene	6			09-Sep-19
	12" Manifold	FWM 115, 12" w 15 4" Flaper Valves	1	\$49,000		09-Sep-19
	Frame Alignment Coupling	Joining FWM 115 to 116	1			09-Sep-19
	12" Manifold	FWM 116, 12" w 15 4" Flaper Valves	1	\$62,900		09-Sep-19
	Mini manifolds	8" mini manifold w/ 4" valve ports	8	\$16,000		09-Sep-19
	Mini manifolds	10" mini manifold w/ 4" valve ports	3	\$15,000		09-Sep-19
	Suction Hose	6" 20 ft Green Suction Hose, Cam Lock	14	\$12,600		09-Sep-19
	Discharge hose	4" 30 ft Black Discharge Hose, Cam Loac	10	\$6,000		09-Sep-19
	Discharge hose	4" 20 ft Black Discharge Hose, Cam Loac	109	\$41,000		09-Sep-19
	Discharge hose	4" 10 ft Black Discharge Hose, Cam Loac	10	\$2,000		09-Sep-19
	Hose Basket	5 x 5 x 20 ft, skidd mounted	2	\$4,000		09-Sep-19
	Centripetal pump	30 Hp pump backup for Astros (New)	1	\$7,000		09-Sep-19
	Ladder	20' Alum slide ladder	1	\$250		10-Sep-19
	Ladder	20' fiberglass slide ladder	1	\$400		10-Sep-19
	Ladder	16' Alum slide ladder	1	\$175		10-Sep-19
	Ladder	10' Alum folding ladder	1	\$100		10-Sep-19
	floats	Aluminum hose floats, 12" Blue	2	\$500	Damaged	10-Sep-19
	Candy Cane	6" Alum suction J-tubes	2	\$1,885		10-Sep-19
	Candy Cane	6" Alum suct J-tube (short more like a U)	1	\$800		10-Sep-19
	Candy Cane	4" Alum suction J-tubes	10	\$8,200		10-Sep-19
	Candy Cane	4" Alum discharge J-tubes	8	\$6,000		10-Sep-19
	Candy Cane	4" plastic suction J-tubes	8	\$11,200		10-Sep-19
	Candy Cane	4" plastic discharge J-tubes	5	\$6,000		10-Sep-19
	Extensions	6" Alum tube 24" extension	3	\$450		10-Sep-19
	Extensions	4" Alum tube 24" extension	8	\$800		10-Sep-19
	Extensions	4" steel tube 24" extension	4	\$400		10-Sep-19
	Hose Reels	8"-10" Hose Reel, hold 205m, Tall version, no Stands	25	\$57,725	July 2015 Purchase, Min Use	10-Sep-19
	Lay Flat Hose	8" x 660 Ft Oroflex 20 Hose	25	\$264,000	July 2015 Purchase, Min Use	10-Sep-19
	Deployer Lay Flat	Hose Deployment unit - For use w Skid Steer	1	\$10,820	July 2015 Purchase, Min Use	10-Sep-19
	Elbows & Fittings	8" Hard Piping Elbow for use with 8" Lay Flat, Vict	50	\$13,126	July 2015 Purchase, Min Use	10-Sep-19
	Tool Box	Steel black Tool Chest for a Pickup trk	1	\$750		10-Sep-19
	portable heater	Herman Nelson heaters	6	\$2,200		10-Sep-19
	Press regulator	CH4 gas pressure regltr w/ black hardcase	5	\$15,000		10-Sep-19
	Shop Air Comp	100 gal TechQuip Air Compressor	1	\$3,800		10-Sep-19
	press washer	Honda press washer on wheels CR 160	1	\$1,000		10-Sep-19
	emergency air	SCBA tanks w/ full face mask in hard case	2	\$4,000		10-Sep-19
	Hydraulic fluid	55 gal drums of AW-22	3	\$2,100		10-Sep-19
	portable vice	folding pipe stand w/ chain vice	1	\$300		10-Sep-19
	Cordless Drill	18V DeWalt cordless Hammer drill	2	\$500		10-Sep-19
	Impact driver	18V DeWalt cordless impact driver	1	\$180		10-Sep-19
	power saw	7.5" corded skill Saw Makita	1			10-Sep-19
Storage rm 4	Weed whacker	Yard Machines small gas weed whacker	1	\$100		11-Sep-19
Storage rm 4	Centripetal pump	10 Hp pump backup to Astros 1new 1rebuilt	2	\$7,000	Suction pump and Motor Astro	11-Sep-19
Storage rm 4	flow meter	8" inline flanged flow meter	3	\$8,970		11-Sep-19
Storage rm 4	flow meter	4" inline flanged flow meter	1	\$1,800		11-Sep-19
Storage rm 4	flow meter	2" inline flanged flow meter	1	\$1,200		11-Sep-19
Storage rm 4	Hydraulic motor	PTO driven Hydraulic motor	1			11-Sep-19
Storage rm 4	Hydraulic motor	Hydraulic driven motor	2		Dragon	11-Sep-19
Storage rm 4	Hydraulic motor	variable valve cti hydraulically driven	2		Dragon	11-Sep-19
Storage rm 4	Drive Coupling	Coupling Sleeves 8H (Orange)	6	\$450	Dragon	
Storage rm 4	Drive Coupling	Coupling Sleeves 9H (Orange)	7	\$525	Dragon	
Storage rm 4	VFD	Modicon PLC (Astro)	1	\$500	Astro Spare	
Storage rm 4		35" H2O press guage	8			
Storage rm 4		Used press guage	4			
Storage rm 4		104sb 200psi guage 2 1/2"	2			
Storage rm 4		LP guage 1/4" BM	1			
Storage rm 4		300 psi guage 1/4"	1			
Storage rm 4	VFD	Modicon TM3AQ4	4	\$900	Astro	
Storage rm 4		0/600 volts ac guage	1		Asto	
Storage rm 4		Propane Shutdown switch	1	\$150	Astro	
Storage rm 4		Switch mode power Supply	1			
Storage rm 4		4" Butterfly valve (new in box)	1	\$250		
Storage rm 4	Burner Control	Model 101 1 1/2 Face 1/8" CBC	1	\$575	Astro	
Storage rm 4		Quick flex coupling (blue)	2	\$100	Dragon	
Storage rm 4		Voltage regulator	1	\$50		
Storage rm 4		Dragon Temp probe 238-0004	2	\$500	Dragon	
Storage rm 4		3-pole, 4 wire, grounding plug	12			
Storage rm 4		heat guns	3	\$250		
Storage rm 4		stanley lights battery powered	3	\$150		
Storage rm 4		60 amp class T fuse	10	\$200	Astro	
Storage rm 4		small belt driven air compressor	1	\$500	Astro	
Storage rm 4		Matrix 15 Deep Impact Socket Set	1	\$150		
Storage rm 4		Enviroflame Gen Set Oil filters	7	\$420		
Storage rm 4		Cascade Controls PLC controller	1	\$5,000	Astro	
Storage rm 4		Siemens 3RW4028-1B815	2	\$1,800	Astro - Soft Start	
	Danfoss	VLT Aqua Drive FC201	1	\$750	Astro - Suction Pump Control	
	Danfoss	VLT Aqua Drive FC202	1	\$1,500	Astro - Discharge Pump Control	
Storage rm 4	Filters	various sizes of fluid filters (new)				11-Sep-19
	riding mower	John Deer Z-track 255 riding lawn mower	1	\$5,000		11-Sep-19
	mower accessory	John Deer Lawn Sweep	1	\$300		11-Sep-19
	road safety kits	Road safety triange kits	25	\$750		11-Sep-19
	hitches	2" ball slide hitch		\$75		11-Sep-19
	hitches	2 5/16" ball slide hitch		\$100		11-Sep-19
	hitches	2" pintle hitch		\$150		11-Sep-19
	hitches	2 5/16" pintle hitch		\$150		11-Sep-19
	tools	3/8" pneumatic impact driver	1	\$100		11-Sep-19
	tools	12" radial chopsaw/grinder	1	\$300		11-Sep-19
		Estimated Total		\$736,726		
		Current Value @ 20%		\$147,345.14		



**Enviroflame**  
technologies

+1-403-548-1231  
+1-403-308-2019  
1110 41st Street North  
Lethbridge, AB T1H 5M1

# high volume industrial water heater

Industry Leading Heating Efficiency and Fuel Savings

## 01 tank specifications & features

- Skidded heater and components **22' long** and **58" wide**, weight is 12,000lbs.
- Tank components and all piping manufactured to Canadian Welding Bureau standards.
- Fully engineered water flow simulation analysis (spray bars and jacket water) for optimal heating efficiency and fuel savings.
- Slim design for optimizing integration space and maximizing accessibility to heater components.
- Proprietary exhaust heat capture system, easy service.
- Proprietary mist extractor.
- Stack water filter and conveniently mounted blow/drain valve.

- Proprietary spray bar design for simple access and inspection/cleanout.
- 2 sight glasses for internal heater flame/water viewing.
- Easy access tank manway and jacket water cleanout ports.
- Non-pressurized system.
- No regulator inspections or operating tickets necessary.

flow rates	temperature rise	
750 gpm	36°C	65°F
800 gpm	34°C	61°F
900 gpm	31°C	57°F

## 02 burner specifications

- 25MM btu Vitotherm high efficiency tri-fuel burner - diesel, propane, natural gas, instant fuel switching.
- Autoflame control package.
- Quiet operation, no air compressor required for combustion, 100% outside air ducting.
- Easy serviceability, swing away hinged blower housing to access combustion components.

- 2 supplied gas trains, (propane and natural gas) compact and mounted on top of heater tank.
- Electronic spark ignition.
- Full safety shutdowns.
- HMI digital display - easy operation, digital combustion curve program uploaded and easily adjustable by technicians, backup program kept on file.

## 03 water pump specification & controls

- 2 operating pumps - 20hp suction & 30hp discharge Berkeley long life centrifugal, VFD controlled, variable output.
- Capable of flow rates up to 950 gpm.
- 2-4" discharge water camlocks, manual butterfly valves on each.
- 2-6" suction water camlocks, manual butterfly valves on each.
- Proprietary built in suction priming/tank draining system - 2" T&E gear pump, automated with electric butterfly valves (no external prime or drain system needed).
- Pressure transducer tank level control for consistent operation.
- High tank level sensor and suction water emergency slammer valve eliminates flooding.
- HMI digital display and control screen - designed for simple operation, minimal training, operations logging and reporting, and simple diagnostics/troubleshooting.
- Electric water flow control valves and meters, no air required for heater operation.
- Full safety shutdowns.



## 04 integration options

- Robust 40 ft hi-cube intermodal sea container, customized, insulated lining and painted exterior.
- Integrated office room with desk.
- Generator/electrical room lined with sound attenuation foam walls and ceiling.
- Generous exterior worksite LED lighting, internal 12v and 110v LED lighting.
- Packaged and ready to be attached on a standard 40' intermodal hi-cube container trailer chassis (supplied by customer).
- Reasonable footprint on lease, with maneuverability. Other integration solutions also available.

## 05 generator & air compressor

- Reliable Isuzu engine with Stamford generator, 120Kw 150Kva prime power.
- Integrated 454 litre diesel fuel tank (approx. 30hr run time) c/w quick switch valve for external fuel tank.
- 60gal vertical tank c/w 240v air compressor for water hose blow out.



## Water Heaters

### 25,000,000 BTU Frac Water Heater Unit

Industry Leading, 95%+ Thermal Heating Efficiency

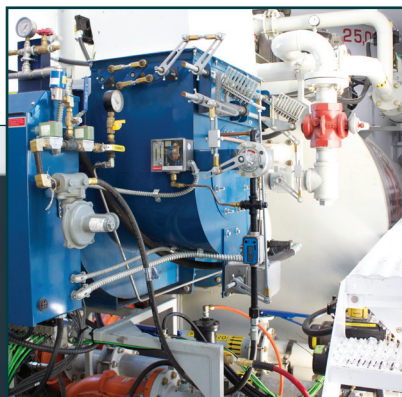
State of the art, tri-fuel (diesel, propane, natural gas), trailer-mounted

Self-contained frac water heater systems

Offers superior heating times and exceptional efficiencies in fuel consumption

### Performance

Temperature Rise:	32 Deg C @ 830 GPM (Nom)
Fuel Rate:	3 GPM, 180 GPH @ Full Fire (Nom)
Thermal Efficiency Average:	95%+
CO <sub>2</sub> Emissions:	0 – 3%



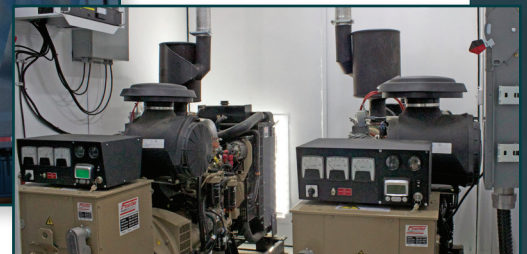
**Tribal North**  
Energy Services

[www.tribalnorth.com](http://www.tribalnorth.com)



## Specifications

- Direct contact combustion chamber is 95%+ thermally efficient – highest in industry
- Tri-fuel capable: flip between diesel and natural gas/propane with a single switch
- Environmentally friendly, producing less than 10 ppm CO and 30 ppm CO2 emissions
- Variable output to 25MM BTU (750 Boiler HP)
- Completely enclosed- all weather capable
- Equipped with 2nd 125 kW genset- complete redundancy as well as available on-lease power
- Lightweight - 75% road ban capable to operate even during breakup
- 9,000 liter onboard diesel fuel, can operate independently for 12+ hours
- 88,000 lumens of perimeter lighting. Allows safe operations even in remote settings
- Onboard air compression sized to clear all hoses- allows environmentally safe usage of produced water
- Variable water flow to 3.5 m3/min
- Fully automated control system with complete data logging.
- 53' trailer



**Calgary Office:**  
1440, 140 – 4th Avenue SW Calgary, AB T2P 3N3  
Phone: (403) 930-0900 Fax: (403) 930-0924

**High Prairie Facility:**  
74405 Rge. Road 180, Box 337 High Prairie, AB T0G 1E0  
Phone: (780) 536-0001 Fax: (780) 536-0003  
Dispatch: 1-855-821-0001

**Tribal North**  
Energy Services

[www.tribalnorth.com](http://www.tribalnorth.com)



## Water Heaters

### 25,000,000 BTU Enviroflame High Efficiency Industrial Water Heater



#### Industry Leading Heating Efficiency & Fuel Savings

##### Tank Specifications & Features

- Skidded heater and components 22' long and 58" wide, weight is 12,000lbs.
- Tank components and all piping manufactured to Canadian Welding Bureau standards.
- Fully engineered water flow simulation analysis (spray bars and jacket water) for optimal heating efficiency and fuel savings.
- Slim design for optimizing integration space and maximizing accessibility to heater components.
- Proprietary exhaust heat capture system, easy service.
- Proprietary mist extractor.
- Stack water filter and conveniently mounted blow/drain valve.
- Proprietary spray bar design for simple access and inspection/cleanout.
- 2 sight glasses for internal heater flame/water viewing.
- Easy access tank manway and jacket water cleanout ports.
- Non-pressurized system.
- No regulator inspections or operating tickets necessary.

Flowrates	Temperature Rise
750 gpm	36°C / 65°F
800 gpm	34°C / 61°F
900 gpm	31°C / 57°F

**Tribal North**  
Energy Services

[www.tribalnorth.com](http://www.tribalnorth.com)

### Burner Specifications

- 25MMbtu Vitothem high efficiency tri-fuel burner-diesel, propane, natural gas, instant fuel switching.
- Autoflame control package.
- Quiet operation, no air compressor required for combustion, 100% outside air ducting.
- Easy serviceability, swing away hinged blower housing to access combustion components.
- 2 supplied gas trains, (propane and natural gas) compact and mounted on top of heater tank.
- Electronic spark ignition.
- Full safety shutdowns.
- HMI digital display - easy operation, digital combustion curve program uploaded and easily adjustable by technicians, backup program kept on file.

### Water Pump Specification & Controls

- 2 operating pumps - 20hp suction & 30hp discharge Berkeley long life centrifugal, VFD controlled, variable output.
- Capable of flow rates up to 950 gpm.
- 2-4" discharge water camlocks, manual butterfly valves on each.
- 2-6" suction water camlocks, manual butterfly valves on each.
- Proprietary built in suction priming/tank draining system-2" T&E gear pump, automated with electric butterfly valves (no external prime or drain system needed).
- Pressure transducer tank level control for consistent operation.
- High tank level sensor and suction water emergency slammer valve eliminates flooding.
- HMI digital display and control screen-designed for simple operation, minimal training, operations logging and reporting, and simple diagnostics/troubleshooting.
- Electric water flow control valves and meters, no air required for heater operation.
- Full safety shutdowns.

### Trailer Configuration

- Robust 40 ft hi-cube intermodal sea container, customized, insulated lining and painted exterior.
- Integrated office room with desk.
- Generator/electrical room lined with sound attenuation foam walls and ceiling.
- Generous exterior worksite LED lighting, internal 12v and 110v LED lighting.
- Heater container attached to 40' air ride trailer chassis.
- Reasonable footprint on lease, with maneuverability. Other integration solutions also available.

### Generator & Air Compressor

- Reliable Isuzu engine with Stamford generator, 120Kw 150Kva prime power.
- Integrated 454 litre diesel fuel tank (approx. 30hr run time) c/w quick switch valve for external fuel tank.
- 60gal vertical tank c/w 240v air compressor for water hose blow out.

#### Calgary Office:

1440, 140 - 4th Avenue SW Calgary, AB T2P 3N3  
Phone: (403) 930-0900 Fax: (403) 930-0924

#### High Prairie Facility:

74405 Rge. Road 180, Box 337 High Prairie, AB T0G 1E0  
Phone: (780) 536-0001 Fax: (780) 536-0003  
Dispatch: 1-855-821-0001

**Tribal North**  
**Energy Services**

[www.tribalnorth.com](http://www.tribalnorth.com)



## Water Heaters

### 40,000,000 BTU Updraft Superheater

Skid Mounted Results in the Smallest Footprint for its Capacity



#### Key Features

- Smallest Foot Print for a 40 MMBTU in the industry
- Propane and Natural gas capability
- Built in 10" manifold making it idea for Slip Steaming application
- Thermal efficiency 72-75%
- Simplified control system, minimal moving parts
- Powered by existing location light tower
- Built in LEL Gas Detection System

#### Performance

- Variable flow rate through coil up to 3.2 m3/min
- Slip-Steaming capability up to 14m3.min
- Capable of temperature rise of 39 deg C @ 3.2m3/min
- Thermal Efficiency up to 75%

**Tribal North**  
Energy Services

[www.tribalnorth.com](http://www.tribalnorth.com)



## Specifications

- 25' x 8' Engineered Skid
- 40 million BTU input propane/natural gas unit
- 3" A106 grade B coil feed off of 4" head manifold c/w Thermo-finned tubing
- Burner chamber constructed of ¼" 44W M. S c/w with two layers of ceramic fiber insulation rated at 3400 degrees of thermal protection.
- 4" manifold System off of rear of Skid C/W blow down air lines
- Power connection 230V 30AMP Twist lock 150' plug in cable
- Internal air Compressor (DV 5HP) for valve control and blow down capabilities
- Work lights mounted around unit for night time operation
- Safety emergency flow switches
- Nitrogen Emergency Shutdown System
- Electronic temperature burner control system
- Constant burner control monitoring system
- Electronic Temperature controller on both input and output
- High temperature shut down on burner system
- SP6 Commercial blast grade on all steel components
- LPG plumbing /NG plumbing
- 10" inlet and Outlet Lines comes with 10" bypass line (Globe valve/Slipstream valve)
- 4" Flowmeter Badgermeter Model (150 ASA, flow rates 3.7 to 1230 GPM, Cast AL)
- UV Integrated Flame Scanner
- Type K temperature control modules
- Dual Ion Pilot Assembly (Ignitors)
- Hot Fill line outlet allows for heating a source while continuing to Slipstream through the 10" bypass



### Calgary Office:

1440, 140 - 4th Avenue SW Calgary, AB T2P 3N3  
Phone: (403) 930-0900 Fax: (403) 930-0924

### High Prairie Facility:

74405 Rge. Road 180, Box 337 High Prairie, AB T0G 1E0  
Phone: (780) 536-0001 Fax: (780) 536-0003  
Dispatch: 1-855-821-0001

**Tribal North**  
Energy Services

[www.tribalnorth.com](http://www.tribalnorth.com)



## Water Heaters

### 38,000,000 BTU Frac Water Heater Unit

State of the art, natural gas or diesel-fired, trailer-mounted

Self-contained frac water heater systems

Offers superior heating times and efficiencies in fuel consumption

### Performance

Water Flow: 850 GPM @ 50 PSI Inlet Pressure (Nom)  
550 GPM @ 30 PSI Inlet Pressure (Nom)  
400 GPM @ 20 PSI Inlet Pressure (Nom)

Temperature Rise: 70 Deg F @ 850 GPM (Nom)  
100 Deg F @ 500 GPM (Nom)

Fuel Rate: 4.3 GPM, 258 GPH @ Full Fire (Nom)

Dimensions: 45' Long, 8' 6" Wide, 13' High  
66,000 Lbs (Nom, Dry Heat Exchanger)



**Tribal North**  
Energy Services

[www.tribalnorth.com](http://www.tribalnorth.com)



## Specifications

### Type

- Natural Gas or Diesel fired, dual burner, trailer mounted, self contained system

### Burner

- Dual burner package, NFPA combustion system, 19 million BTU per hour per burner
- Pressurized fuel and pressurized air systems for fuel atomization
- Blower system for positive combustion air
- LP fired pilot with spark ignition
- Digital burner controls with programmable water temperature and burner fire rates
- Safety shutdowns

### Heat Exchanger

- 2" – SA106 GR B, SCH 40 pipe
- Multi core, multi pass, low pressure design
- inlet and outlet manifolds within burner chamber
- 6x5 hydraulic drive centrifugal water charge pump
- Multiple 4" suction and discharge connections at rear of trailer

### Burner Chamber

- 1/4" steel plate construction
- removable top with air operated hinged covers
- 3" ceramic fiber insulation rated at 2300° on all surfaces including top

### Fuel Tank

- 2700 gal aluminum fuel tank
- Top fill and lower pressure fill connections
- Top manway, pressure relief valve, level gauge
- air operated vent valve, air operated fuel supply valve to burner
- Manual fuel supply valve to deck engine
- Heated and insulated tank bottom shell

### Engine

- John Deere engine with jacket water heater and aluminum enclosure

### Hydraulic System

- 300 gal hydraulic tank
- 4 Pump system with 2 oil coolers, valves and controls
- System operates, water charge pump, combustion blower, fuel pump, air compressor

### Air Compressor

- rotary screw air compressor system with reservoir tanks, moisture separator, and aluminum enclosure

### Trailer

- High strength drop deck frame
- 3 axle with air ride suspension, lift on rear axle
- ABS brake system, led lights



Calgary Office:  
1440, 140 – 4th Avenue SW Calgary, AB T2P 3N3  
Phone: (403) 930-0900 Fax: (403) 930-0924

High Prairie Facility:  
74405 Rge. Road 180, Box 337 High Prairie, AB T0G 1E0  
Phone: (780) 536-0001 Fax: (780) 536-0003  
Dispatch: 1-855-821-0001

**Tribal North**  
Energy Services

[www.tribalnorth.com](http://www.tribalnorth.com)



We will exceed our clients' expectations in the delivery of  
**HIGH QUALITY, INNOVATIVE INDUSTRIAL AND FABRICATION SOLUTIONS**

WELDING | FABRICATION | MECHANICAL SERVICES | DANGEROUS GOODS INSPECTION

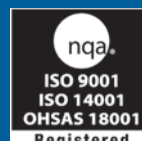


 [WWW.DYNAMICIS.CA](http://WWW.DYNAMICIS.CA)

 **403-527-7272**  
 **JOED@DYNAMICIS.CA**

**LOCATION**  
1791, 30 Street SW  
Medicine Hat, AB » T1B 3N5

DYNAMIC INDUSTRIAL SOLUTIONS CERTIFICATES AND MEMBERSHIPS



**CUSTOMIZED  
OILFIELD HEATING EQUIPMENT**



# 36,000,000 - 40,000,000 BTU FRAC WATER HEATER SKID

Dynamic Industrial Solutions is a manufacturer of custom (truck, trailer, and skid mounted) frac heating equipment. The highly efficient propane or natural gas 'Heater', is used in many oilfield fluid heating applications such as:

- HEATING MULTIPLE 400BBL & 500BBL TANKS
- HEATING C-RINGS/POSEIDONS
- HEATING LARGE OPEN PITS
- HEATING PIPELINES

Our unique 'skid mounted' design also has slip-streaming capabilities, safety standards/shutdowns that meet and exceed the Canadian & US marketplace qualifications, ease of use operation, the ability to instantly switch from natural gas to propane, and a proven reliable track record in the oil & gas industry.



## TECHNICAL SPECS & FEATURES

### BURNER CONTROL

Constant burner control monitoring system  
High temperature shut down on burner system

### AUXILIARY FUEL

100 lb. Propane tank mount  
50 gallon sub base fuel tank  
Non UL/C

### FITTING STORAGE

Natural gas conversion (included)

### HEATER

3" A106 Grade B coil feed off  
4" head manifold c/w thermo-finned tubing

Burner chamber constructed of 1/4" 44W M.S. C/W with two layers of ceramic fiber insulation rated at 3400 degrees of thermal protection.

Maximum flowrate through coils  
3000 LPM/792 GPM/25 BBL.

Maximum flowrate when slip-streaming  
14,000 LPM/3698 GPM/117 BBL

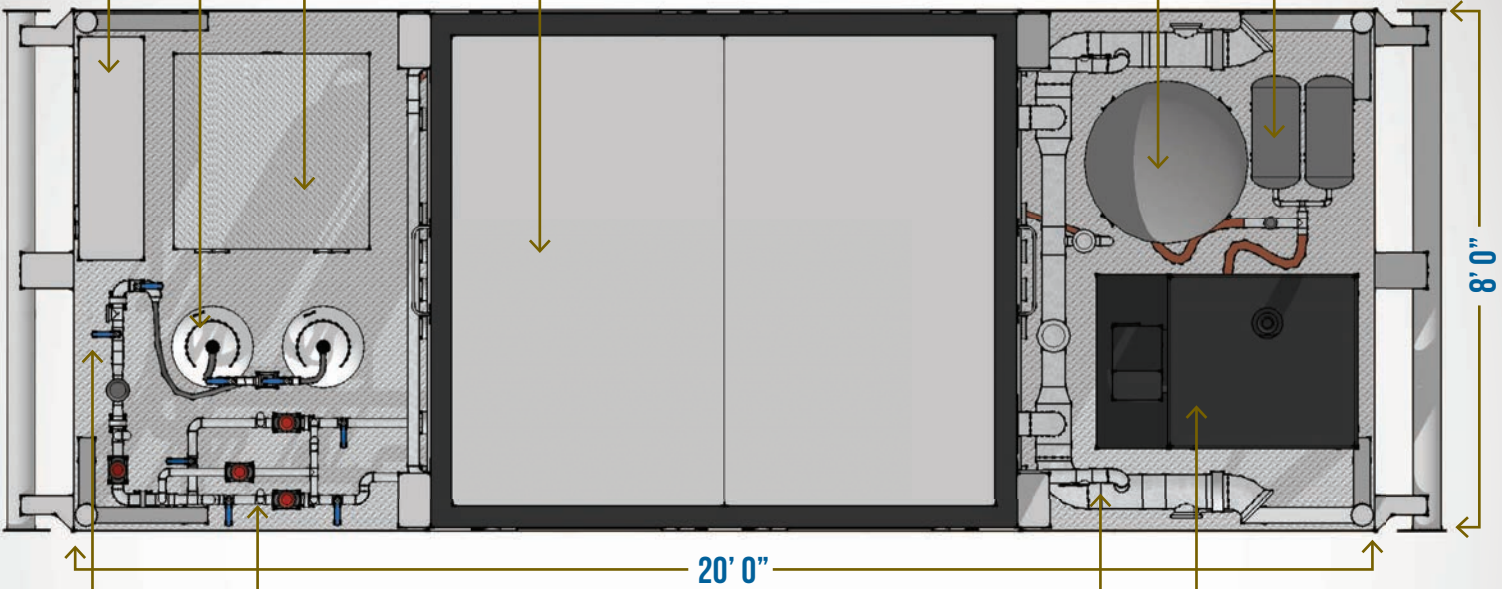
- **NEW** 30 AMP power capability
- Work lights mounted around unit for night time operation
- LPG plumbing /NG plumbing
- Computerized ignition system
- Flame Scanner

### MAIN AIR STORAGE

Belt driven air compressor  
approximately 6 CFM @ 100 psi

6" manifold system off of rear of skid C/W blow down air lines

### AUXILIARY AIR STORAGE



### GAS INLET

Safety emergency flow switches

### MAIN VALVE TRAIN

All valves and stop valves in compliance with B620 -09

CSA approved valve train 4" flow meter

### MAIN WATER MANIFOLD

10" inlet and outlet lines comes with 10" bypass line (globe valve)

### GENERATOR & AIR COMPRESSOR

Kubota D1703 naturally aspirated diesel engine

40 million BTU input propane system 12 kW 120/240 volt single phase

## DYNAMIC ADVANTAGE



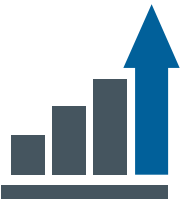
24/7 SERVICE & SUPPORT



30 AMP TWISTLOCK POWER CAPABILITY



CONVERSION IN SECONDS  
HIGHLY EFFICIENT PROPANE & NATURAL GAS CAPABILITIES



EXTREMELY EFFICIENT  
• HIGH FLOW RATES  
• LESS MOVING PARTS



MINIMAL OPERATING COSTS  
INDUSTRY LEADER



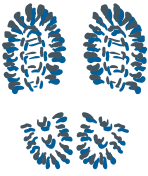
LOCATED IN SE ALBERTA  
2 HOURS FROM MONTANA BORDER



CSA APPROVED VALVE TRAIN  
(DESIGNED FOR CANADIAN WINTERS)



UNIQUE INTELLIGENT DESIGN



SMALL FOOTPRINT  
DESIGNED FOR MANY HEATING APPLICATIONS



SAFETY LEADERS  
PROVEN SAFETY FEATURES



APPLICATION EXAMPLES Heating C-Rings/poseidons, multiple tanks, large pit/containment pod along with slip-streaming capabilities