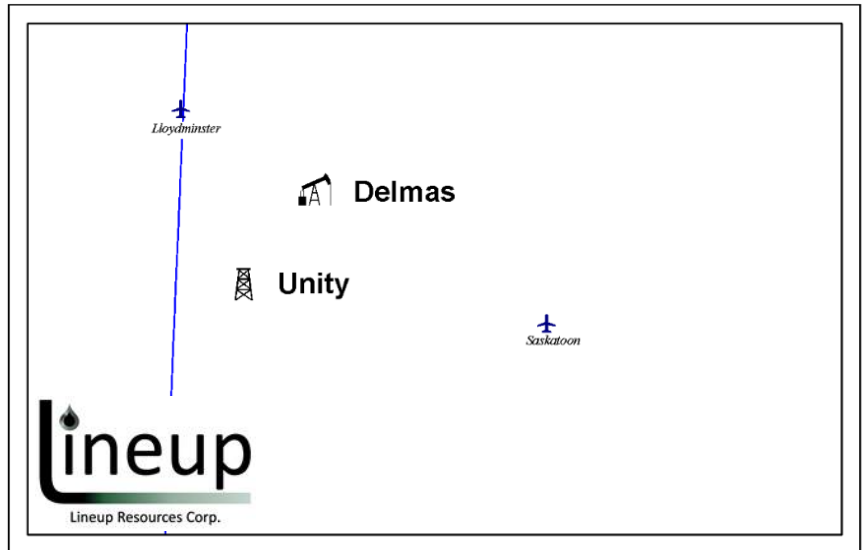


**Property Divestiture:
Mannville Stack Oil Prospects
Delmas & Unity, Saskatchewan**



Lineup Resources Corp. (“Lineup” or the “Company”) has engaged **Sayer Energy Advisors** to assist the Company with the farmout or sale of its oil interests located in the *Delmas* and *Unity* areas of Saskatchewan (the “Properties”). The Company is seeking proposals for the Properties in order to focus its operations on its core assets.



The Properties are prospective for oil production from stacked Mannville zones which contain significant original oil in place, with low recovery factors and opportunities for horizontal development drilling.

Average daily production net to Lineup from *Delmas* for the quarter ended March 31, 2026 was approximately 15 bbl/d of oil.

As of March 6, 2026, the *Delmas* property had a deemed net asset value of \$2.1 million (deemed assets of \$2.2 million and deemed liabilities of \$82,200), with an LMR ratio of 26.94.

Further technical details on the Properties will be made available to parties that execute a confidentiality agreement.

PROCESS & TIMELINE

Sayer Energy Advisors is accepting proposals from interested parties for the Properties until **12:00 pm on Thursday, May 7, 2026**.

Timeline	
Week of March 30, 2026	Preliminary Information Distributed
Week of April 6, 2026	Data Room Opens
May 7, 2026	12:00 noon
May 1, 2026	Effective Date
Second Quarter 2026	Closing Date

Sayer Energy Advisors does not conduct a “second-round” bidding process; the intention is to attempt to conclude a transaction(s) with the party(ies) submitting the most acceptable proposal(s) at the conclusion of the process.

Sayer Energy Advisors is accepting proposals from interested parties until noon on Thursday, May 7, 2026.



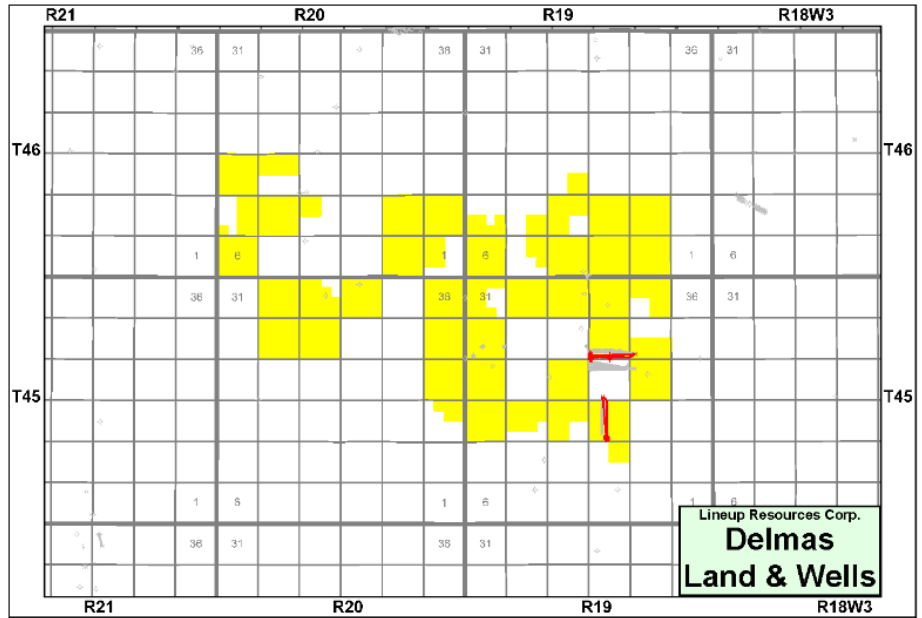
Delmas Property

Township 45-46, Range 19-20 W3

At *Delmas*, Lineup holds a primarily 100% working interest in approximately 35 sections of land on which there are two horizontal oil wells. One well is currently producing from the Mannville Group. The *Delmas* property consists of 26 sections of Crown land, 3 sections of Freehold and 6 Fee sublease sections.

The property is prospective for further oil development from stacked formations of the Mannville Group.

The Company has identified approximately 270 potential locations within 3 primary zones of interest on its land at *Delmas*, including the Rex, Sparky and Lloydminster zones.



Additional prospective zones within the Mannville stack include the Cummings, GP and Dina. Total recoverable reserves are estimated at approximately 36 million barrels of oil.

Average daily production net to Lineup from *Delmas* for the quarter ended March 31, 2026 was approximately 15 bbl/d of oil.

Delmas Reserves

McDaniel & Associates Consultants Ltd. (“McDaniel”) prepared an independent reserves evaluation of the Properties (the “McDaniel Report”). The McDaniel Report is effective December 31, 2025 using an average of *GLJ Ltd.*, *McDaniel*, and *Sproule ERCE*’s forecast pricing as at January 1, 2026.

McDaniel estimated that, as at December 31, 2025, the *Delmas* property contained remaining proved plus probable reserves of 21,000 barrels of oil, with an estimated net present value of \$43,000 using forecast pricing at a 10% discount.

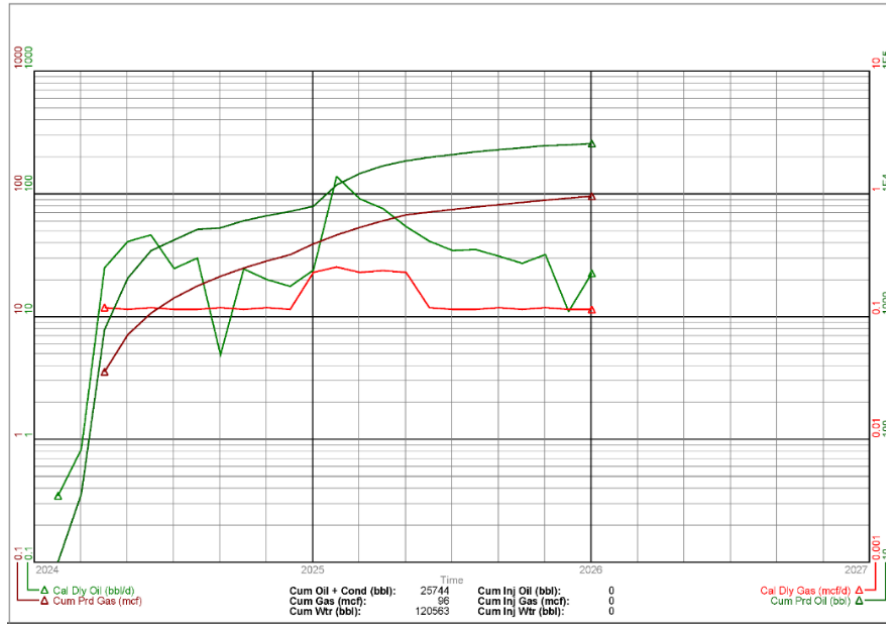
McDaniel & Associates Consultants Ltd. as at December 31, 2025							
COMPANY GROSS RESERVES					PV BEFORE TAX		
	Oil	Natural Gas	Ngl	Total	5%	10%	15%
	Mbbl	MMcf	Mbbl	MBOE		(000s)	
Proved Developed Producing	4	0	0	4	\$9	\$8	\$8
Proved Non-Producing/Undeveloped	8	0	0	8	\$7	\$6	\$4
Total Proved	12	0	0	12	\$16	\$14	\$13
Probable	9	0	0	9	\$33	\$29	\$25
Total Proved Plus Probable	21	0	0	21	\$49	\$43	\$37

The reserve estimates and forecasts of production and revenues for the Company’s properties were prepared within the context of a group of properties in aggregate. Extraction and use of any individual property evaluation outside of this context may not be appropriate without supplementary due diligence. Values in the “Total” row may not correspond to the total of the values presented due to rounding.





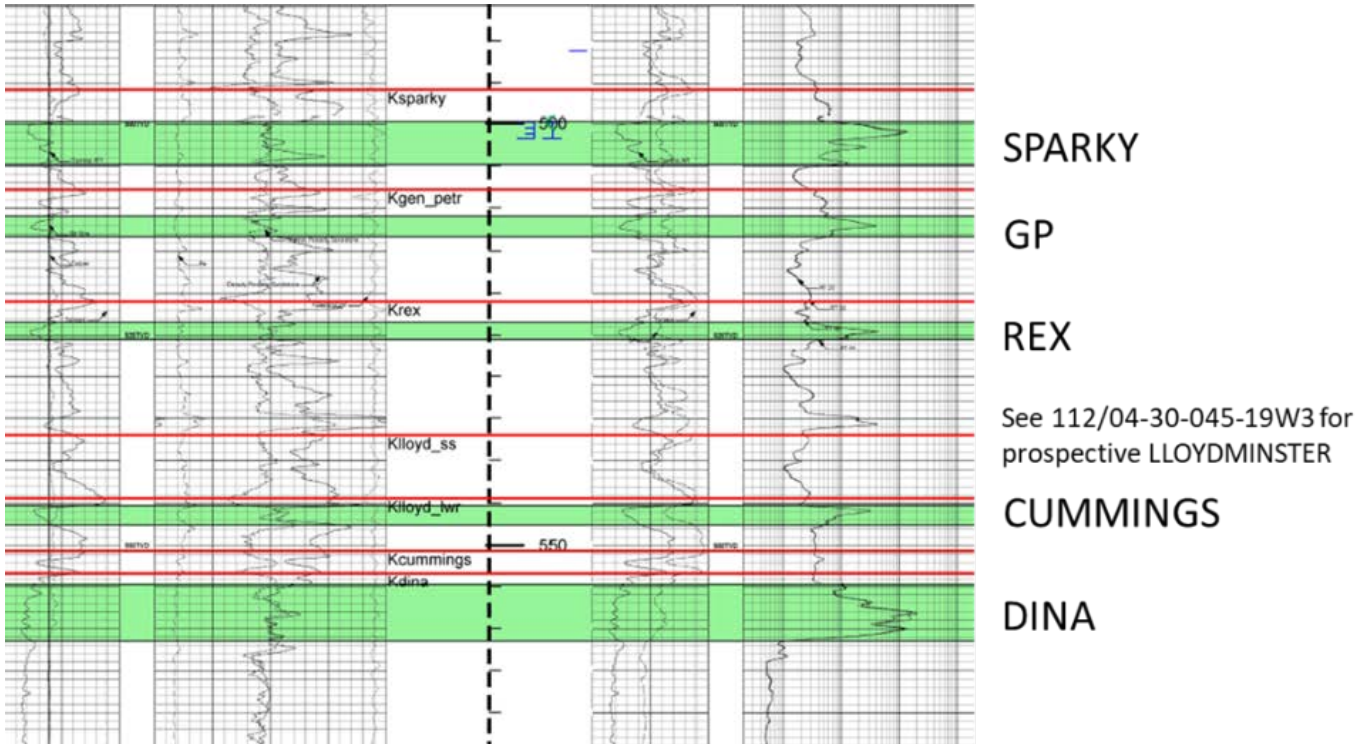
Delmas, Saskatchewan – Gross Production Group Plot of Lineup’s Oil Wells



Delmas Upside

The Company has identified 3 primary zones of interest on its land at *Delmas*, consisting of the Rex, Sparky and Lloydminster zones. Additional prospective zones within the Mannville stack include the Cummings, GP and Dina.

Broadview Delmas DD 4D16-33-1A 91/01-04-046-19W3/0 – Mannville Type Log





Rex Formation

The Rex Formation represents a regionally extensive target across the acreage at *Delmas* in four separate prospects, with a minimum 45 metre oil column and production shows from legacy vertical wells. The Company believes successful development of the Rex zone could result in over 135 multilateral locations with estimated ultimate recovery of 125,000 bbl per well with 17.1 MMbbl of total recoverable reserves. The Rex shoreface sandstone has excellent reservoir properties.

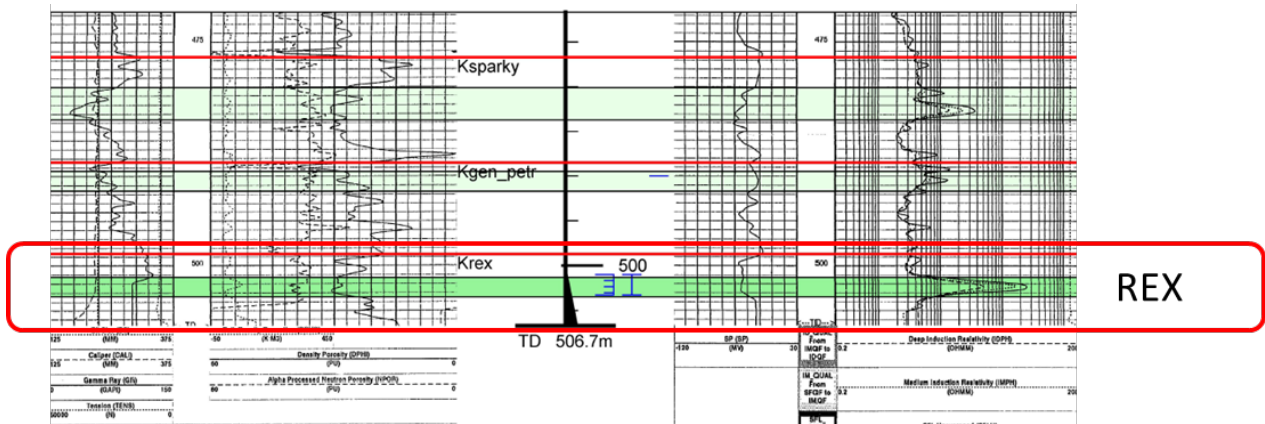
Lineup drilled two wells at *Delmas* into the Rex Formation at 101/03-15-045-19W3 and 101/01-27-045-19W3. Both wells were drilled as single leg lined laterals with circulation strings. The wells were drilled in this style based on core, which indicated strong CHOPS potential, and a strong vertical production test from a well in a regional downdip position.

Lineup now believes the Rex zone is a better candidate for multileg horizontal development. The lack of notable sand production, from the 1-27 well in particular, has demonstrated the Rex reservoir remains competent in this area.

With initial rates from 1-27 of approximately 100 bbl/d of oil and maintaining a steady rate of approximately 35 bbl/d of oil after 6 months, Lineup believes there is potential to scale these rates, with the typical multi-lateral well having 8-10 times the open-hole metres as the 1-27.

The following well logs show oil pay in the Rex target.

CNRL Oliver LK A 101/13-22-045-19W3/0 – Rex Type Log



Net Oil Pay: 2.2m

Production
Oil (CTD): 5,781 bbl
Water (CTD): 21,171 bbl

Offset to LRC HRZ 1-27-045-19W3 Producer at toe





High Rate Circulation Wells

High-rate circulation, single leg wells with slotted liners are a new production technique, which results in a significantly higher recovery factor than development using multi-lateral drilling. Lineup continues to believe that the Sparky and Lloydminster formations at *Delmas* are excellent candidates for development using high rate circulation wells. Both the Lloydminster and Sparky have several areas that are easily co-developed with the extensive Rex Formation.

Lineup has used the **Baytex Energy Ltd. Ardmore (062-03W4)** Sparky pool as an analog high-rate circulation development to illustrate the recovery potential at *Delmas*.

Lineup analyzed a fully developed 1.7 section portion of the *Ardmore* pool (062-03W4) where Baytex has drilled 28 wells and production peaked at over 2,000 bbl/d of oil.

The average *Ardmore* well is expected to recover 152,000 bbls. This projected recovery of 4.3 MMbbls represents 18.9% of the 22.5 MMbbls of oil originally in place mapped across the 1.7 sections.

Baytex's *Ardmore* wells show improving results over time, which Lineup believes can be attributed to more efficiently placing laterals within the reservoir with increased experience and control.

Lineup's development scenario assumes a 17.5% recovery factor for the Sparky, and 12.5% recovery factor for the Lloydminster.

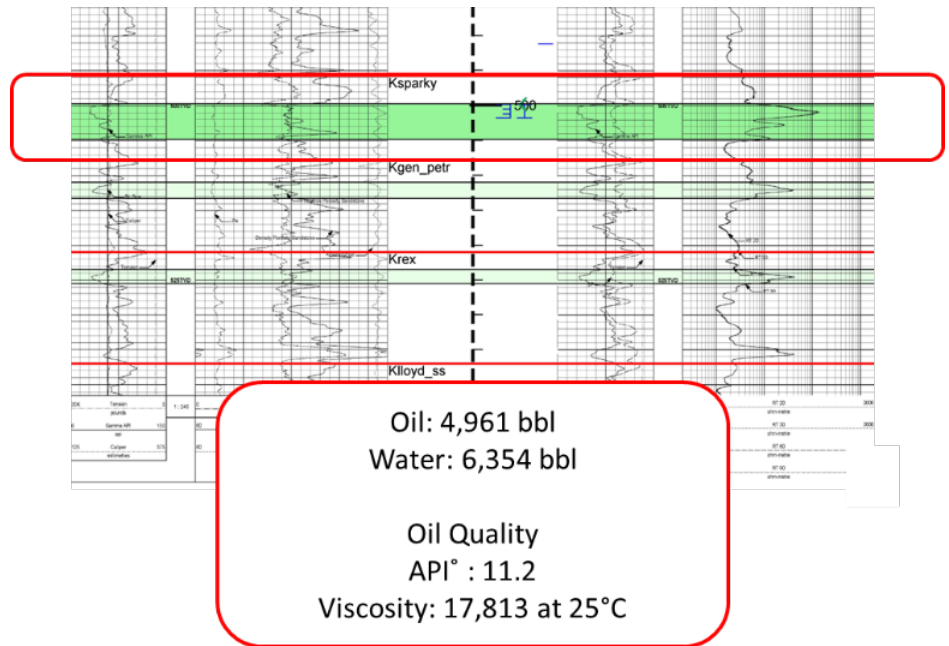
Sparky Formation

An additional proven target identified by Lineup is the Sparky shoreface sandstone, with excellent reservoir properties, core with strong indication of CHOPS potential, and a strong vertical production test from a well in a regional downdip position.

Lineup has captured drillable inventory of over 50 Sparky locations with estimated ultimate recovery per well of 135,000 bbls and total recoverable oil in place of approximately 7 MMbbls.

Lineup views this as an excellent single-lined lateral with high-rate circulation string candidate based on core review, reservoir properties and historical sand production from the **Broadview Energy Ltd. 191/01-04-046-19W3/00** vertical well. This is similar to the existing commercial development of the Sparky at *Ardmore* (62-3W4) using the same development strategy.

Broadview Delmas DD 4D16 191/01-04-046-19W3/00 –Sparky Formation Type Log





Lloydminster Formation

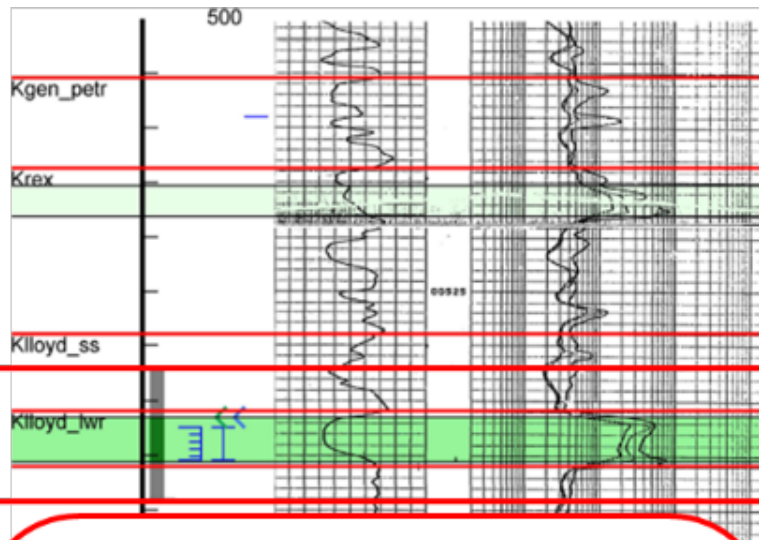
Lineup has identified the additional proven target of the Lloydminster shoreface, with over 4 metres of sandstone with excellent reservoir properties, core with strong indication of CHOPS potential, and a strong vertical production test from a well in a good structural position.

Lineup has captured drillable reservoir for over 90 Lloydminster drilling locations with estimated ultimate recovery per well of 137,000 bbls and total recoverable oil in place of 13.2 MMbbls.

The **Canadian Natural Resources Limited** 112/04-30-045-19W3 vertical well produced approximately 2,200 bbls of oil in the Lloydminster Formation.

At *Delmas*, Lineup has identified upside potential in multiple pools in the Lloydminster Formation. The following well logs indicate the Lloydminster target.

COPRC 11/04-30-045-19W3/00 – Lloydminster Formation Type Log



Oil: 2,235 bbl
Water: 5,801 bbl

LDMR Core
 $\phi_{AVE} = 34\%$ $S_o = 68\%$

Oil Quality
API° : 10.1
Viscosity: 73,000 at 25°C

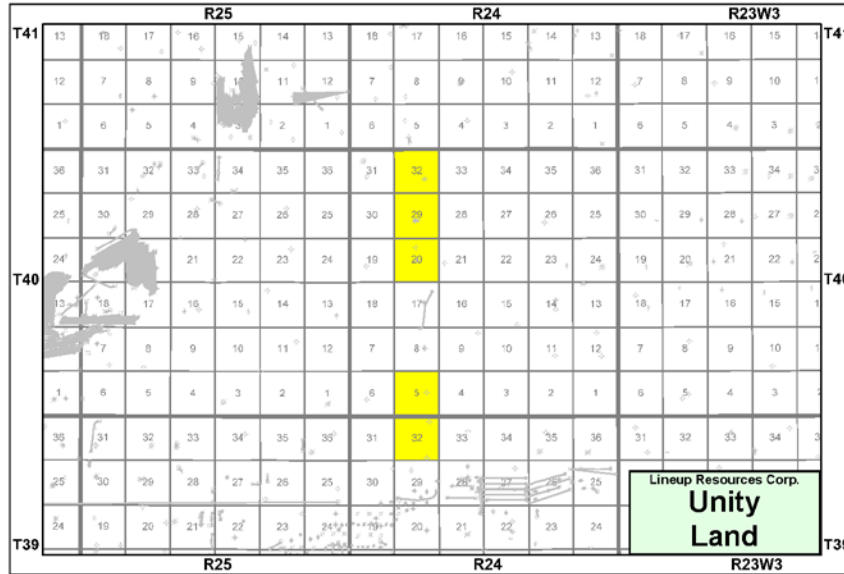




Unity Property

Township 39-40, Range 24 W3

At *Unity*, Lineup holds a 100% working interest in P&NG rights from surface to the top of the Precambrian in 5 sections of land. The *Unity* property is prospective for oil from stacked formations of the Mannville Group.



Unity Upside

Lineup has 5 sections of land which is highly prospective in the Waseca Formation. Based on original oil in place, Lineup believes this target can be developed using industry adopted multi-lateral drilling techniques.

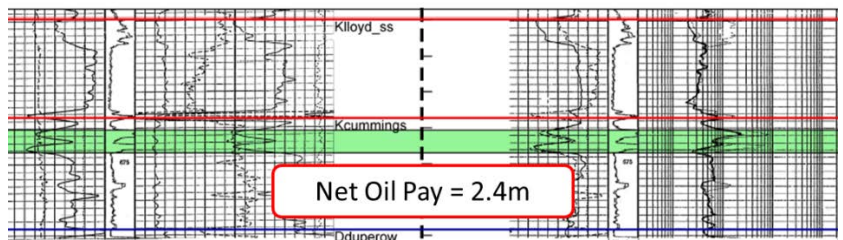
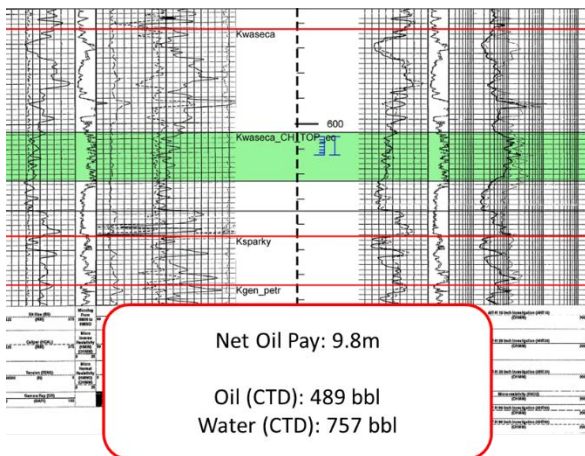
Three wells on the property have proven production from the Waseca zone with 11.1 API oil and viscosity of 16,000 cP at 25°C.

Additionally, 2 of the 5 sections at Unity were acquired for highly prospective Cummings shoreface potential.

A show well at 132/04-12-041-25W3 held by **Longshore Resources Ltd.** in the Cummings has produced over 14,000 bbls of oil.

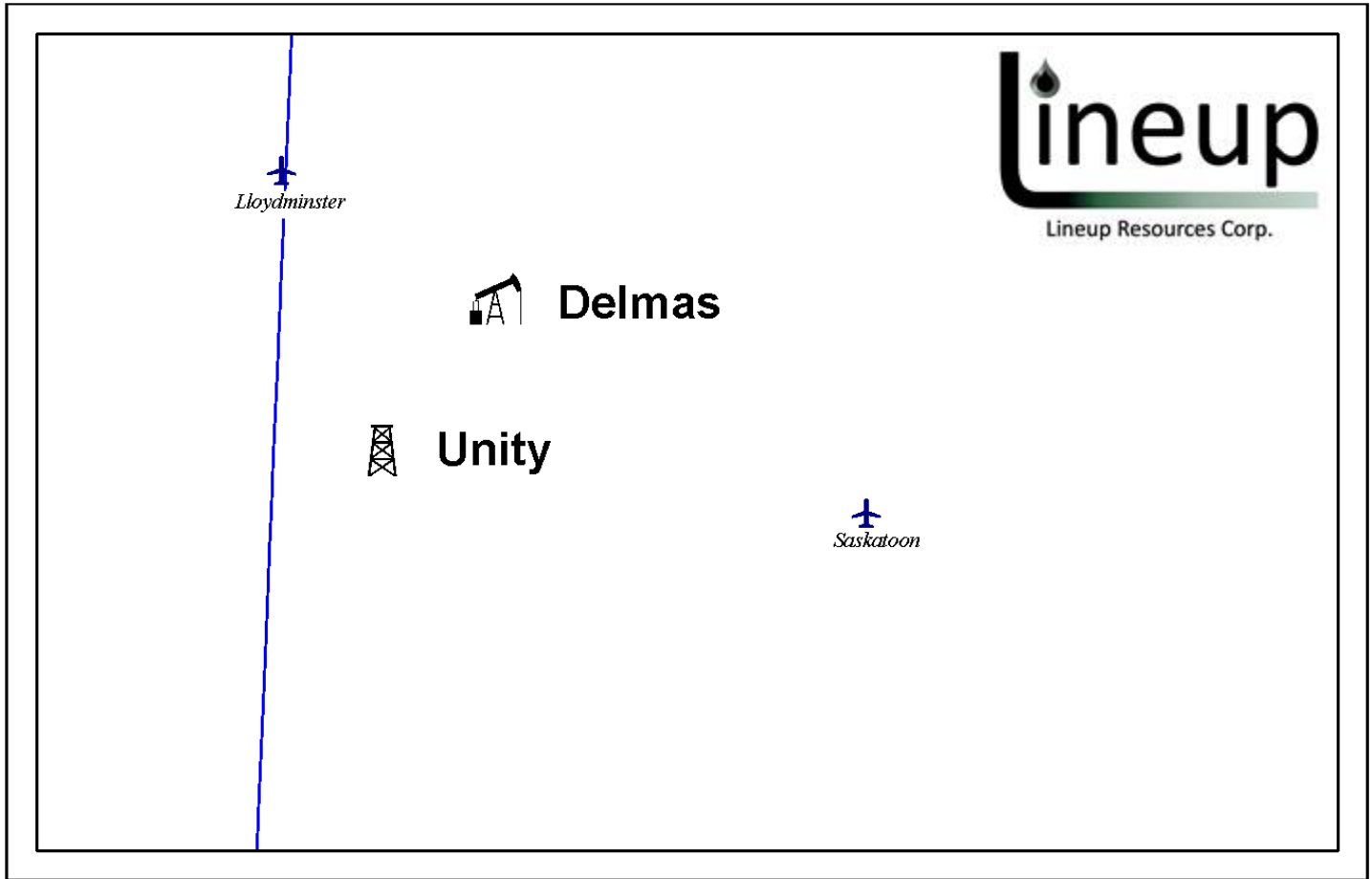
Gear DD 91/06-29-040-24W3/00 – Waseca Formation Type Log

Gear DD 91/06-29-040-24W3/00 – Cummings Formation Type Log





Lineup Resources Corp. Property Divestiture Spring 2026



CONTACT

Parties wishing to receive access to the confidential information with detailed technical information relating to this opportunity should execute the confidentiality agreement which is available on Sayer Energy Advisors' website (www.sayeradvisors.com) and return one copy to Sayer Energy Advisors by courier, email (brye@sayeradvisors.com) or fax (403.266.4467).

Included in the confidential information is the following: summary land information, the McDaniel Report, geological summary, financial information, and other relevant technical information.

To receive further information on the Properties please contact Ben Rye, Tom Pavic or Sydney Birkett at 403.266.6133.

